



PRODUCT DATA SHEET

ElastiKote® 1000 SB Silver

1-18-2012
1 of 4

DESCRIPTION

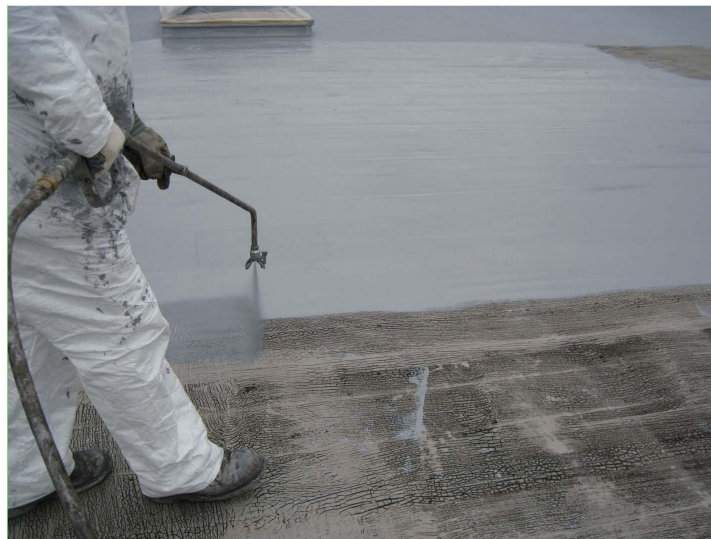
ElastiKote® 1000 SB Silver is a low VOC, ready-to-use polymeric, stain blocking fluid-applied base styrene ethylene butylene styrene (SEBS) membrane. ElastiKote 1000 SB Silver is highly effective for restoring roof types such as BUR, modified bitumen, and coal tar pitch. At the initiation of the SEBS restoration process, asphalt based substrate types are vulnerable to surface permeation of compatibalized oils which create discoloration within reflective SEBS roof coatings. Such discoloration reduces the reflectivity and emissivity properties of the top coating. ElastiKote 1000 SB Silver prevents the compatibalized oils from the underlying asphalt based roof substrate from migrating to the surface of the topcoat. ElastiKote 1000 SB Silver is meant to be used as a base coat only. When restoring metal roofing where previous "patching or coating" with materials such as asphalt mastic or aluminized asphalt shall remain within the target substrate, the product is also effective in preventing color permeation within these types of target restoration areas.

ElastiKote 1000 SB Silver is available in 5-gallon re-sealable pails or 50-gallon (net by weight) drums. ElastiKote 1000 SB Silver is manufactured in our ISO 9001:2008 Registered facility located in Smithville, Ohio.

TECHNICAL INFORMATION

PHYSICAL PROPERTIES	
Physical State	Viscous liquid
Volatile Organic Content (g/l)	< 50
Viscosity (cps)	6,000 – 7,000
Odor	Low aromatic (masked)
Density at 77°F	9.0 lb/g +/- 0.5
Application	Roll or spray
Coverage	1.5 gal/sq

Spraying ElastiKote® 1000 SB Silver



www.elastikote.com

Toll free (800) 992-1053

To the best of our knowledge and subject to change without prior notice, the technical values or data contained herein is true and accurate as of the date of issuance. There is no implied or express warranty given through these values or statements, nor are there any assertions that the product purchased has been individually tested to conform to these standards. Testing is performed on a random basis by our in-house and independent third party labs for the purpose approval and/or classification. Acceptance, purchase and selection of these products are the sole responsibility of the buyer, buyer's agent or buyer's customer. ElastiKote, LLC assumes no responsibility for coverage, performance or injuries resulting from use. Liability, if any, is limited to replacement of the product. NO OTHER GUARANTY OR WARRANTY OF ANY KIND IS MADE BY ELASTIKOTE, LLC, EXPRESSED OR IMPLIED, STATUTORY, BY OPERATION OF LAW, OR OTHERWISE, INCLUDING MERCHANTABILITY AND FITNESS FOR A PARTICULAR PURPOSE.



PRODUCT DATA SHEET

ElastiKote[®] 1000 SB Silver

1-18-2012
2 of 4

BUR Surface Dehydration Cracks (Alligatoring)



Squeegee Methodology for Application on BUR Substrate Restoration

Initial coating of Elastikote 1000 SB Silver



www.elastikote.com

Toll free (800) 992-1053

To the best of our knowledge and subject to change without prior notice, the technical values or data contained herein is true and accurate as of the date of issuance. There is no implied or express warranty given through these values or statements, nor are there any assertions that the product purchased has been individually tested to conform to these standards. Testing is performed on a random basis by our in-house and independent third party labs for the purpose approval and/or classification. Acceptance, purchase and selection of these products are the sole responsibility of the buyer, buyer's agent or buyer's customer. Elastikote, LLC assumes no responsibility for coverage, performance or injuries resulting from use. Liability, if any, is limited to replacement of the product. NO OTHER GUARANTY OR WARRANTY OF ANY KIND IS MADE BY ELASTIKOTE, LLC, EXPRESSED OR IMPLIED, STATUTORY, BY OPERATION OF LAW, OR OTHERWISE, INCLUDING MERCHANTABILITY AND FITNESS FOR A PARTICULAR PURPOSE.



PRODUCT DATA SHEET

ElastiKote[®] 1000 SB Silver

1-18-2012
3 of 4

Roof Restoration–Project Overview

For specific detailed information refer to the Elastikote material substrate specification.

Storage and Handling

Maintain materials in their original unopened containers with all labels intact and legible. Store containers on pallets in a covered or protected area. **Store in areas where maximum temperature does not exceed 90°F and at a minimum of 40°F. Never store drums in an open environment without using proper protective moisture proof covering as condensation or rain, under certain circumstances, may infiltrate and contaminate the drum contents through the “bung” and ring areas. KEEP OUT OF REACH OF CHILDREN. KEEP AWAY FROM FLAME OR ANY OTHER SOURCE OF IGNITION.**

Roof Inspections

Inspections may include a pre-application technical field evaluation for determination of the acceptability of the substrate. An adhesion test may be required to ensure compatibility with the existing target substrate. At the conclusion of the project a final inspection may be conducted.

Contractor Qualification

All contractors installing Elastikote materials are thoroughly trained by the Manufacturer in all aspects of use and application of materials. Certification credentials are issued upon completion of training activities.

Surface Preparation

Surface must be dry, clean, and free from dirt, loose rust and foreign substances. Certain surfaces may require power washing and wire brushing to remove loose mill scale, biomass, expended paint or coatings, corrosion or any loose foreign particulate. Rusty metal surfaces must be primed. Certain surfaces must also be cleaned with use of a special cleaner. Certain surfaces require a supplemental coating. Supplemental coatings can be Elastikote 1000 Sprayable Mastic, Elastikote 1000 or a “slurry” mix of Elastikote 1000 and dry sand. The supplemental coating or slurry mix is to be applied with a squeegee.

Application

Prior to application, always ensure the target substrate is totally dry with no ice, dew, frost or any other type of moisture present. Priming may be needed. Always refer to guidelines in the Elastikote material substrate specification.

ElastiKote 1000 SB Silver must be properly heated and stirred prior to either spray, roller or brush application methodology. To maximize product performance and ease of application, always heat the product to a temperature range of between 100°F and 130°F with 4” wide heat bands or heat exchanger. When using spray type application methodology, it is especially important to heat product to ensure proper viscosity for maximum performance of applied product in both **warm and cold weather.**

Material Heating Guide

*ElastiKote 1000 SB Silver temperature (top)													
**Target substrate temperature (bottom)													
*130	125	120	115	110	105	100							
**40	50	60	70	80	90	100	110	120	130	140	150	160	

Determine “on site” the proper application *temperature* for efficient and quality assuring best practice product installation. Temperature selection can vary. Selection will be impacted by existing ambient air temperature, target roof substrate temperature, specific roof slope and size, and the type and size of selected spray pump and spray tip to be used. Always synchronize the heating process of the material to be installed with target substrate temperature. When target substrate is equal (very hot during the summer) or in excess of the product application temperature, always adjust the product temperature before application. If applied product becomes too hot from the combination of preparation heating and exposure to extreme heat of target substrate, the product will run or “sag” resulting in low and unacceptable millage thickness. Conversely, if the product is not heated sufficiently and is applied at too low a temperature, the spray pattern will result in the phenomena known as “webbing” or “fingering” and the product will not self-level. If in doubt, always contact Manufacturer.

Stir entire heated material container (summer & winter) thoroughly prior to application. Always mix (stir) from bottom to top using a paddle type mixer at a minimum of 20 minutes for a 50–gallon drum and 5 minutes for a 5–gallon pail. Be diligent that paddle sweeps actual bottom of drum. Do not over mix or allow cavitation of product (make bubbles), as air entrainment will result in pinholes.



PRODUCT DATA SHEET

ElastiKote[®] 1000 SB Silver

1-18-2012
4 of 4

Tools & Equipment

Follow personal protective equipment requirements as listed on material MSDS. Utilize appropriate OSHA safety equipment. Drum and/or pail 4" heat bands or heat exchanger, infrared thermometer, wet mil gauge, and paddle type mixer are required. Spray application is the preferred method. Use a Graco 733, Graco 833, or similar (3 gpm output & displacement pump of 3500 psi) equipment with appropriate tips. Use a smooth-medium nap roller or soft brush if not spraying. Use squeegee for alligatored BUR surfaces. Use tarpaulins or other durable materials to protect adjacent areas from damage.

Application – Cont.

To best work efficiently, keep two or three 5-gallon pails or two 50-gallon drums heating and/or stirring ahead of crew. Heating a 5-gal pail from 70°F to 130°F with one 4" wide heat band on max (#10 setting) should require approximately 10 minutes plus an additional 5 minutes to mix. Heating a 50-gallon drum from 70°F to 130°F when using a heat exchanger should take between 20 – 30 minutes. Heating a 50-gallon drum from 70°F to 130°F with two 4" wide band heaters on max (#10 setting) should take approximately 30 – 40 minutes.

Apply product using appropriate spray equipment (preferred method) or product can be rolled with smooth-medium nap roller or soft brush at ambient temperatures above 40°F (4°C). Remove all filters from spray unit or spray guns. Use heavy duty (XHD) tips without a diffuser or atomizer bar. Tip sizes range from 633 to 637 and 733 to 737. Tips may need to be adjusted depending on slope and product. Hold spray wand during application no higher than 12 inches from target substrate with 50% overlap and allow product to "FLOW" AND "SELF-LEVEL". Always spray at a straight "up and down" or 90° angle to enhance performance. Always remix product after any application work stoppage of **20 minutes or more** to ensure critical additive products stay in suspension.

Minimum Suggested Coverage Rate

Surface dictates actual rate. Refer to guidelines in the Elastikote material substrate specification.

Apply in **one** coat at a minimum of 21 wet mils (*@ 1.5 gallons per 100 sq ft for low slope surfaces. Always compensate with additional product for dehydration cracks (Alligatoring) based upon specific jobsite conditions.*)

This results in a finished coating @ a minimum of 10 dry mills.

Drying Time

Minimum dry time of 24–48 hours for stain blocking material.

Clean-Up

Clean equipment, brushes, rollers, and tools using Regular Mineral Spirits.